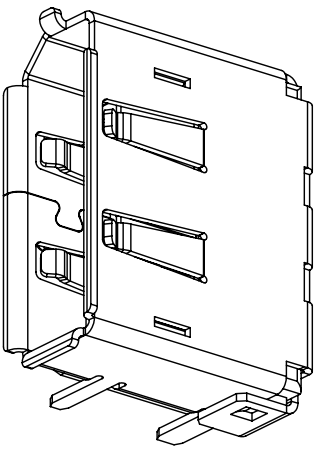


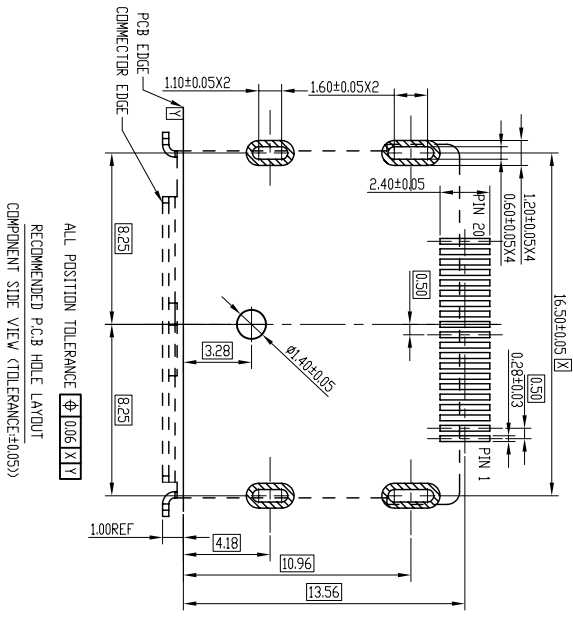
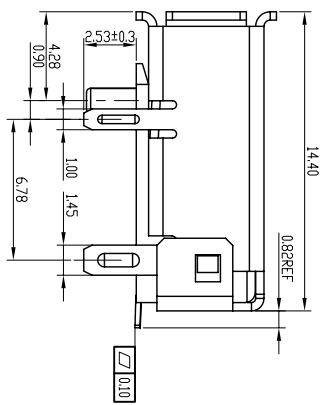
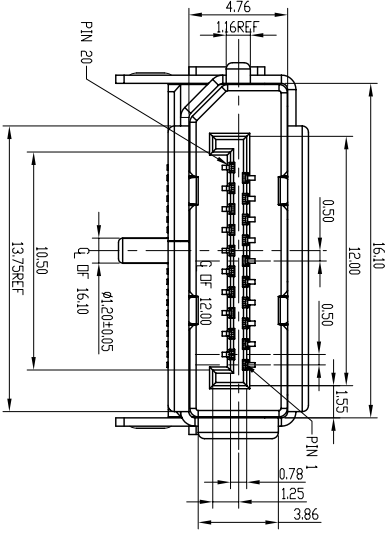
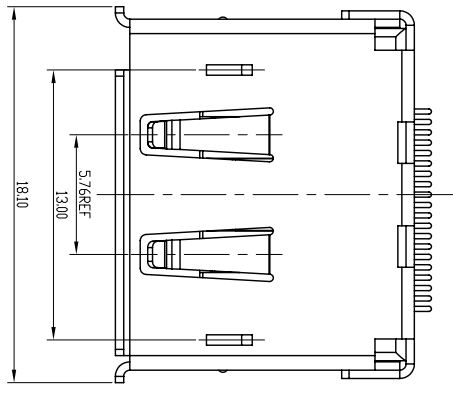
| | | |
|-----|-------------|--------|
| REV | DESCRIPTION | DATE |
| 0 | ??? | 070319 |



MATERIAL:
 HOUSING: CP+30ZG/F UL94 V-0 BLACK
 TERMINAL: PHOSPHOR BRONZE T=0.25MM
 SHELL: COPPER ALLOY T=0.4MM

PLATING:
 TERMINAL: GOLD PLATED IN CONTACT AREA,
 TIN PLATED AT SOLDER AREA,
 NICKEL UNDERPLATED OVER ALL.
 SHELL: NICKEL PLATED OVERALL.

NOTES:
 1. HIGH TEMP-PROCESS STATEMENT:
 230 DEGREE C FOR 30 TO 60 SECONDS,
 AND 260 DEGREE C FOR 10 SECONDS.
 2. THIS COMPONENT AND ITS HOMOGENEOUS
 SUBCOMPONENTS ARE ROHS COMPLIANT.



Ordering Information
 DP 3 C 20 - C X 02 X
 Contact Area Plating
 S1S7 : Gold/LEAD-FREE(C002)TIN
 6307 : Gold/LEAD-FREE(C002)TIN
 7Gold Flash/LEAD-FREE(C002)TIN

Color/Material:
 C=Black/LCP

| | | | |
|--|--|----------------------|----------------------|
| QUALITY SYMBOLS | GENERAL TOLERANCES (UNLESS SPECIFIED) | SCALE: 4:1 | NUMBER: 41 |
| 0.0 | MM | | |
| 0.0 | INCH | | |
| X | ±0.35 | | |
| XX | ±0.25 | | |
| .XXX | ±0.15 | | |
| ANGULAR ±3° | | | |
| DRAWN BY DATE | | | |
| KINGSER 070319 | | | |
| CHECKED BY DATE | | | |
| APPROVED BY DATE | | | |
| PART NO. DP3C20-CX02X | | | |
| DWG NO. DP-002 | | | |
| SHEET NO. 1/1 | | | |
| TITLE: E-GREEN ENTERPRISE CO, LTD. DISPLAYPORT EXTERNAL CONNECTOR | | | |
| THIRD ANGLE PROJECTION | | | |
| REVISE ON CAD ONLY | | | |

DRAFT WHERE APPLICABLE MUST REMAIN WITHIN DIMENSIONS

THIS DRAWING CONTAINS INFORMATION THAT IS PROPRIETARY TO E-GREEN ENTERPRISE CO, LTD. AND SHOULD NOT BE USED WITHOUT WRITTEN PERMISSION