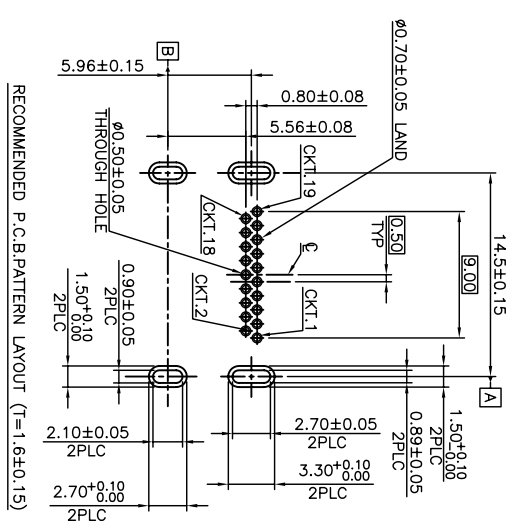
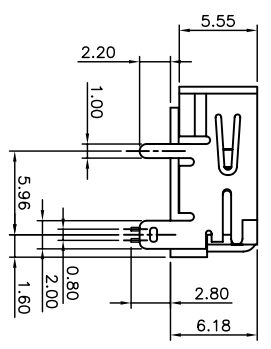
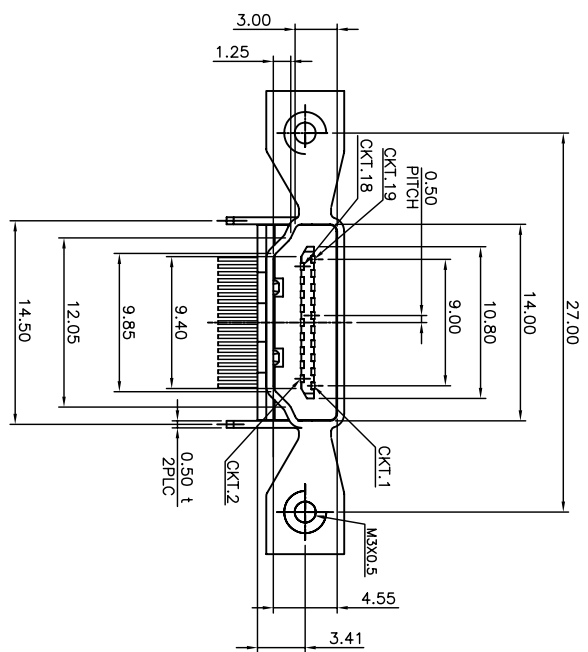
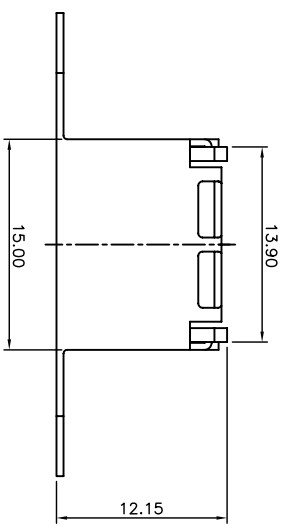


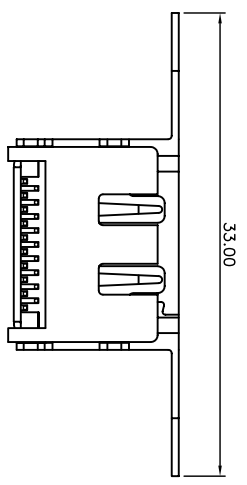
REV	DESCRIPTION	APPR	CHECK	DRAW	DATA
???	???			JANET	040806

NOTES:
 1. MATERIAL:
 HOUSING: THERMOPLASTIC WITH 30% G/F, UL 94V-0
 COLOR: BLACK
 CONTACT: PHOSPHOR BRONZE C5191-H, T=0.25mm
 SHELL: PHOSPHOR BRONZE (C5191-RH), T=0.50mm
 2. FINISH:
 CONTACT: 15u" GOLD/TIN PLATING ON CONTACT AREA
 100u" MIN. LEAD-FREE (100%) TIN PLATING ON SOLDER TAILS
 50u" MIN. NICKEL UNDERPLATING OVER ALL
 SHELL: 50u" MIN. NICKEL UNDERPLATING OVER ALL

Ordering Information
 HI 1 B 19 - C X 11 X
 COLOR/MATERIAL:
 C=BLACK/LCP
 ...
 Contact Area Plating
 5:1.5? " Gold/LEAD-FREE(100%)TIN
 6:3.0? " Gold/LEAD-FREE(100%)TIN
 7: Gold Flash/LEAD-FREE(100%)TIN
 ...



RECOMMENDED P.C.B. PATTERN LAYOUT (T=1.6±0.15)



QUALITY SYMBOLS	GENERAL TOLERANCES (UNLESS SPECIFIED)	SCALE: 2.5:1	NUMBER:	E-GREEN ENTERPRISE CO., LTD.	
MM	INCH	MATERIAL:	DATE:	TITLE:	
.X	±.38		DATE:	HDMI RIGHT ANGLE HEADER	
.XX	±0.25		DATE:	19PIN DIP TYPE WITH FLANGE	
.XXX	±0.13		DATE:	THIRD ANGLE PROJECTION	
	ANGULAR ±3'		DATE:	REVISE ON CAD ONLY	
	DRAFT WHERE APPLICABLE		DATE:	PART NO. HI/B19-CX11X	
	MUST REMAIN WITHIN DIMENSIONS		DATE:	DWG NO. HI-1011	
			DATE:	SHEET NO. 1/1	
			DATE:	A4	

