

PART NO. SEE TABLE 1

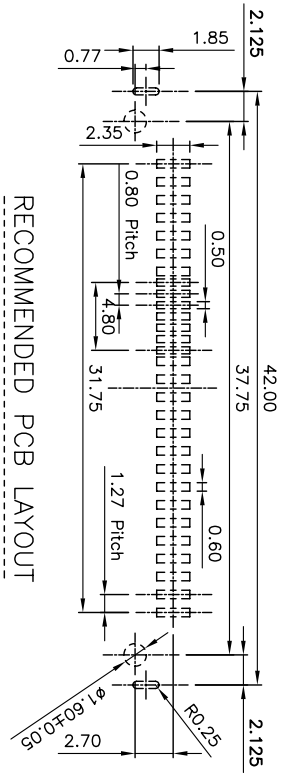
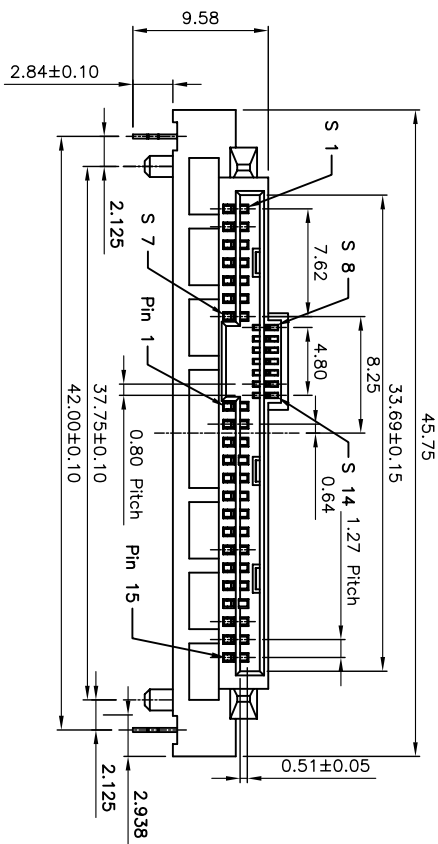
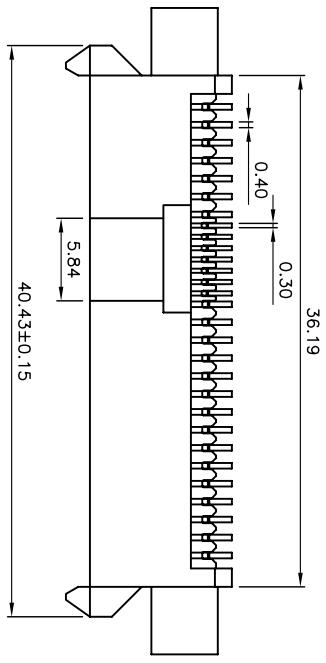
4

3

2

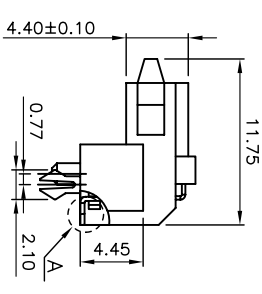
1

REVISIONS			
LTR	DESCRIPTION	Drawing	DATE
A0	ease for Manufacture	Initial Rel	Jim
			05/17/05

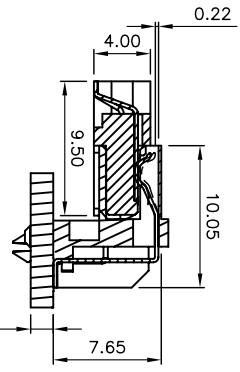


RECOMMENDED PCB LAYOUT

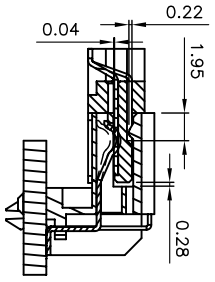
- NOTES:
- MATERIAL :  
HOUSING : LIQUID CRYSTAL POLYMER(LCP), G.F.30%, UL94V-0, COLOR : BLACK  
TERMINAL: PHOSPHOR BRONZE,C521 EXTRA HARD (H06)  
THICKNESS = 0.25 mm  
FORKLOCK: PHOSPHOR BRONZE,C5191 EXTRA HARD (H06)  
THICKNESS = 0.30 mm
  - TERMINAL AND FORKLOCK PLATING :  
CONTACT AREA : (p) GOLD FLASH  
(b) GOLD (Au),30 MICRONCH MINIMUM  
SOLDER TAIL : TIN-LEAD(Sn-Pb)ALLOY,75 MICRONCH MINIMUM  
UNDER PLATE : NICKEL (Ni),50 MICRONCH MINIMUM



Detail A (4:1)



MATING VIEW



NO	DESCRIPTION	QTY	UNIT
4			

DIMENSION ARE MILLIMETERS		APPROVALS		DATE		E-GREEN ENTERPRISE CD., LTD.	
TOLERANCES ARE:		DRAWN	Jim	05/17/05	TITLE:	ASSEMBLY OF SAS 29P R/A SMT	
XX ± 0.25	ANGLE: ± 9°	CHECKED			SHEET SCALE:	DRAWING NO.:	REV.:
DIMENSION BRACKET	ANGLE: ± 9°	APPROVALS			1 : 1	000100	A0
TOLERANCES ARE:					mm		
XX ± 0.25					ID NO:	XXXXXXXXXX	SHEET 1 OF 1
XX ± 0.50							

DO NOT SCALE DRAWING

ASSEMBLY OF SAS 29P R/A SMT

000100

SHEET 1 OF 1